

Once installed your private sewage treatment system should provide many years of quality service.

But like your automobile, all sewage systems need care and maintenance.

Please contact your Local Health Department Environmental Health Specialist or a representative from the Division of Water to learn how they can help you care for your new sewage system.



Septic Systems Contact:

KY Department of Public Health
Division of Public Health Protection
and Safety
Environmental Management Branch
HS 1C-D
275 East Main St
Frankfort, KY 40621
Phone: (502) 564-4856
www.chs.ky.gov/publichealth/environmental

KPDES-Permitted Units Contact:

Division of Water
14 Reilly Rd
Frankfort, KY 40621
Phone: (502) 564-3410
[Http://www.waterky.gov/permitting/wastewaterpermitting/kpdes/residences](http://www.waterky.gov/permitting/wastewaterpermitting/kpdes/residences)

The Commonwealth of Kentucky provides, upon request, reasonable accommodations including auxiliary aids and services necessary to afford an individual with a disability an equal opportunity to participate in all services, programs and activities. To request materials in an alternative format, contact the Office of the Secretary, Communications Staff, 514 Capital Plaza Tower, Frankfort, KY 40601 or call (502) 564-5525. Hearing- and speech-impaired persons can contact the agency by using the Kentucky Relay Service. For voice to TDD, call (800) 648-6057. For TDD to voice, call (800) 648-6056.

Commonwealth of Kentucky Application & Permitting Process For Individual Home Sewage Systems

So, You Want to Build A House?



Produced by:

KY Cabinet for Health & Family Services

&
KY Energy and Environment Cabinet

May 2013

Kentucky
UNBRIDLED SPIRIT™

All homes need a sewage disposal system.

Contact your City/County to determine if you have access to a sanitary sewage connection (City Sewer).

If you do not have access to sanitary sewer you will be required to install a private sewage system.

Many types of private sewage systems may be available depending upon where you live.

These may include:

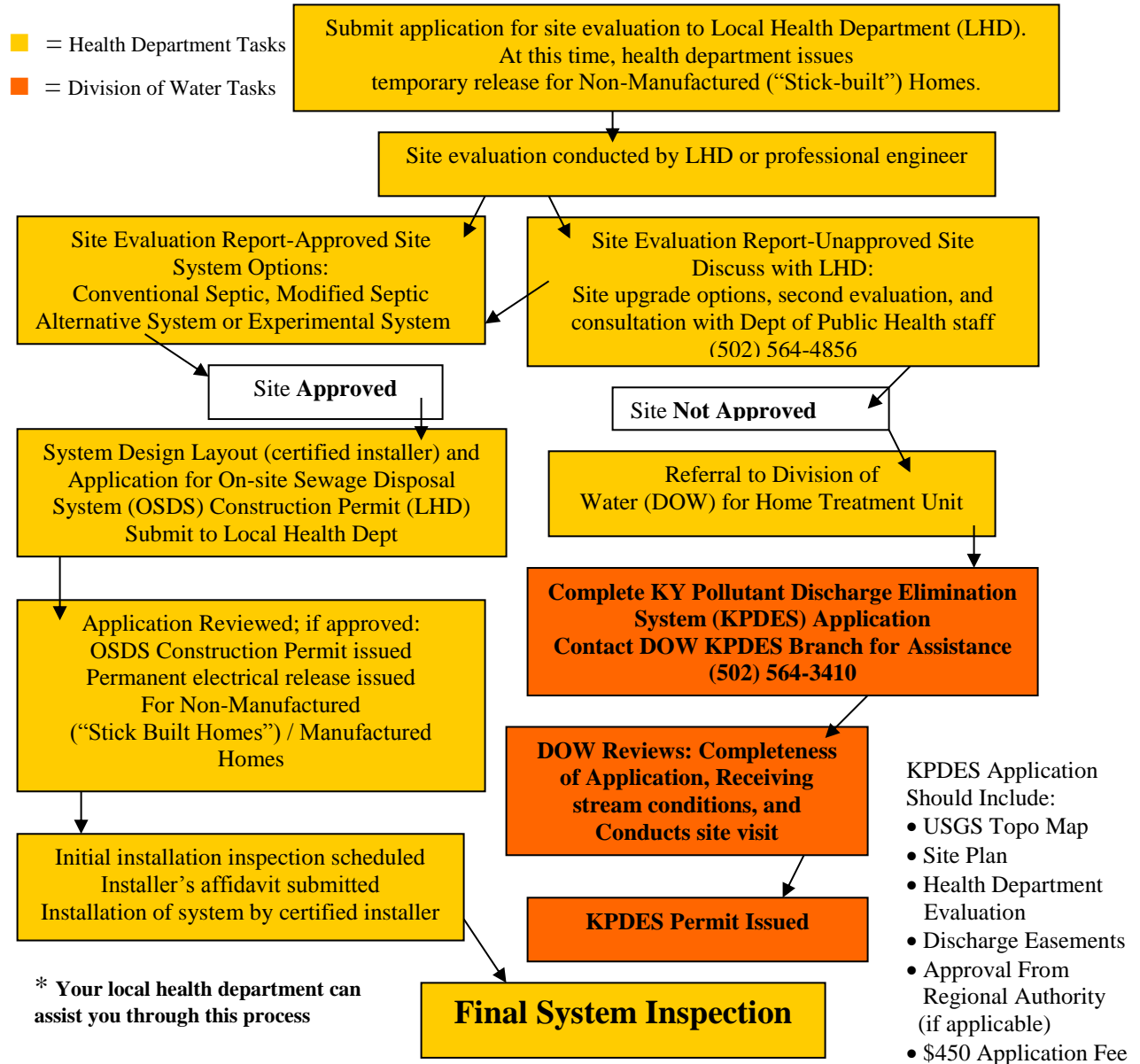
- Septic Tanks and Lateral Field
- Gravelless Leaching Systems
- Artificial or Constructed Wetlands
- Sewage Lagoons
- Modified or Experimental Systems
- Aerobic Treatment Systems
- Home Treatment Units



To find out what options may be available for your tract of land, follow the chart:



Commonwealth of Kentucky Application & Permitting Process For Individual Home Sewage Systems



This document was printed on recycled/recyclable paper.